

SKYLINE

# The Coral



Start fresh in Fort Myers with a beautiful cottage home.

3 BED / 2 BATH / CARPORT  
1,280 SQ. FT.

## FEATURES

Hardwood Shaker Cabinetry\*  
Luxury Vinyl Plank Flooring\*  
Ceramic Tile Backsplash\*  
High Definition Countertops  
Kitchen Island with Ample Storage  
Stainless Steel Electric Appliances  
Tray Ceilings & Crown Molding Detail  
Farmhouse Kitchen Sink

Walk-in Ceramic Tile Shower  
Framed Bathroom Mirrors  
Satin Nickel Hardware  
Designer Pendant Lights  
Covered Front Porch  
Open Concept Floor Plan  
Built to Highest Wind Zone Standards (WZ3)

Reserve your new home by contacting our Sales Team.

PHONE  
(239) 397-3119

EMAIL  
sales@theospreybay.com

**TheOspreyBay.com**

\*Custom color choices available.  
All home features are subject to change. Conceptual images may not accurately represent the home.



SKYLINE

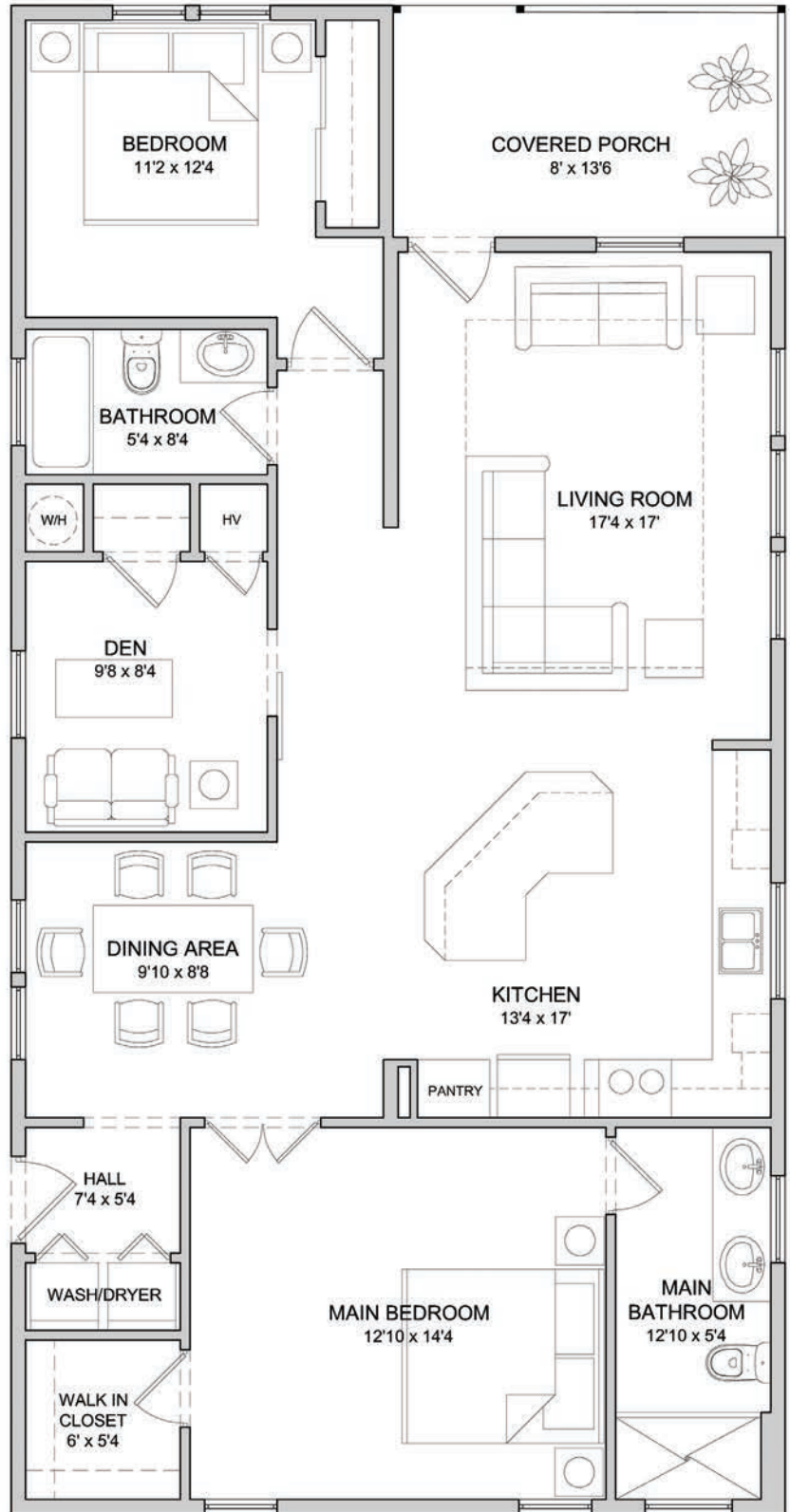
# The Coral

3 BED / 2 BATH / CARPORT


1,280 SQ. FT.

## BEST-IN-CLASS AMENITIES

- Gated Community
- Designer-Appointed Clubhouse
- Resort Pool & Spa
- Entertainment Pavilion
- Outdoor Bar, Grill, & Firepit
- Putting Green
- Dog Park
- Charming Lake
- Boat & RV Storage
- Sport & Fitness Center with:
  - Resort Pool
  - Golf Simulator
  - Pickleball Courts
  - Bocce Ball Courts
  - Shuffleboard Courts
  - Horseshoe Pits



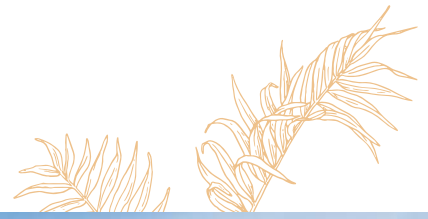
[TheOspreyBay.com](https://TheOspreyBay.com)

 Layout and dimensions may vary based on individual homes. Images may not accurately reflect the home.

 osprey bay

SKYLINE

# The Palm



Start fresh in Fort Myers with a beautiful cottage home.

2 BED / 2 BATH / CARPORT  
1,415 SQ. FT.

## FEATURES

Hardwood Shaker Cabinetry\*  
Luxury Vinyl Plank Flooring\*  
Ceramic Tile Backsplash\*  
High Definition Countertops  
Kitchen Island with Ample Storage  
Stainless Steel Electric Appliances  
Tray Ceilings & Crown Molding Detail  
Farmhouse Kitchen Sink

Walk-in Ceramic Tile Shower  
Framed Bathroom Mirrors  
Satin Nickel Hardware  
Designer Pendant Lights  
Covered Front Porch  
Open Concept Floor Plan  
Built to Highest Wind Zone Standards (WZ3)

Reserve your new home by contacting our Sales Team.

PHONE  
(239) 397-3119

EMAIL  
sales@theospreybay.com

[TheOspreyBay.com](https://www.theospreybay.com)

\*Custom color choices available.  
All home features are subject to change. Conceptual images may not accurately represent the home.

 osprey bay

SKYLINE

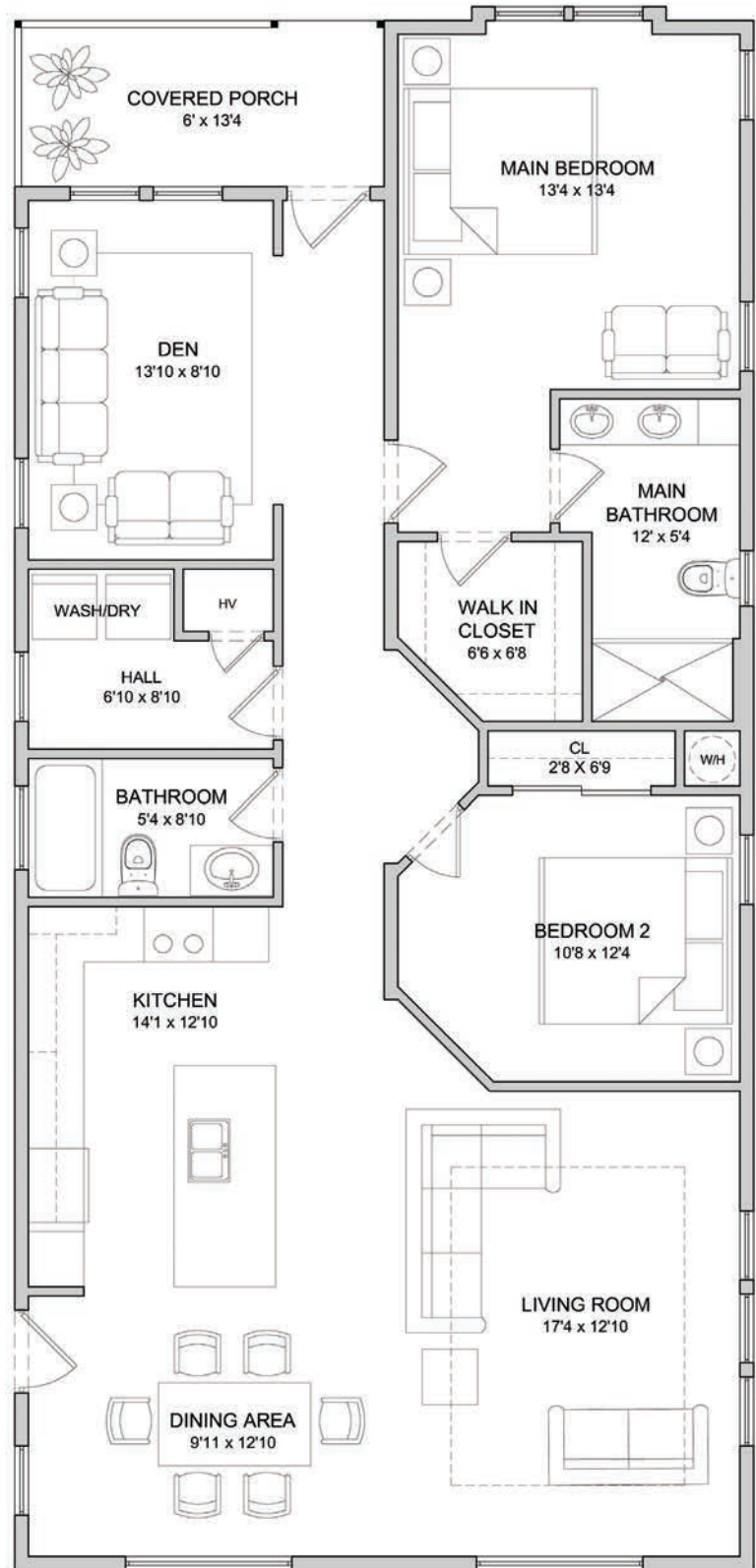
# The Palm

2 BED / 2 BATH / CARPORT


1,415 SQ. FT.

## BEST-IN-CLASS AMENITIES

- Gated Community
- Designer-Appointed Clubhouse
- Resort Pool & Spa
- Entertainment Pavilion
- Outdoor Bar, Grill, & Firepit
- Putting Green
- Dog Park
- Charming Lake
- Boat & RV Storage
- Sport & Fitness Center with:
  - Resort Pool
  - Golf Simulator
  - Pickleball Courts
  - Bocce Ball Courts
  - Shuffleboard Courts
  - Horseshoe Pits



[TheOspreyBay.com](http://TheOspreyBay.com)

 Layout and dimensions may vary based on individual homes. Images may not accurately reflect the home.

 osprey bay

SKYLINE

# The Camelia



Start fresh in Fort Myers with a beautiful cottage home.

3 BED / 2 BATH / GARAGE  
1,316 SQ. FT.

## FEATURES

Hardwood Shaker Cabinetry\*  
Luxury Vinyl Plank Flooring\*  
Ceramic Tile Backsplash\*  
Kitchen Island with Ample Storage  
High Definition Countertops  
Stainless Steel Electric Appliances  
Tray Ceiling & Crown Molding Detail  
Farmhouse Kitchen Sink

Walk-in Ceramic Tile Shower  
Framed Bathroom Mirrors  
Satin Nickel Hardware  
Designer Pendant Lights  
Covered Front Porch & Rear Deck  
Open Concept Floor Plan  
Built to Highest Wind Zone  
Standards (WZ3)

Reserve your new home by  
contacting our Sales Team.

PHONE  
(239) 397-3119

EMAIL  
sales@theospreybay.com

**TheOspreyBay.com**

\*Custom color choices available.  
All home features are subject to change. Conceptual images may not accurately represent the home.



SKYLINE

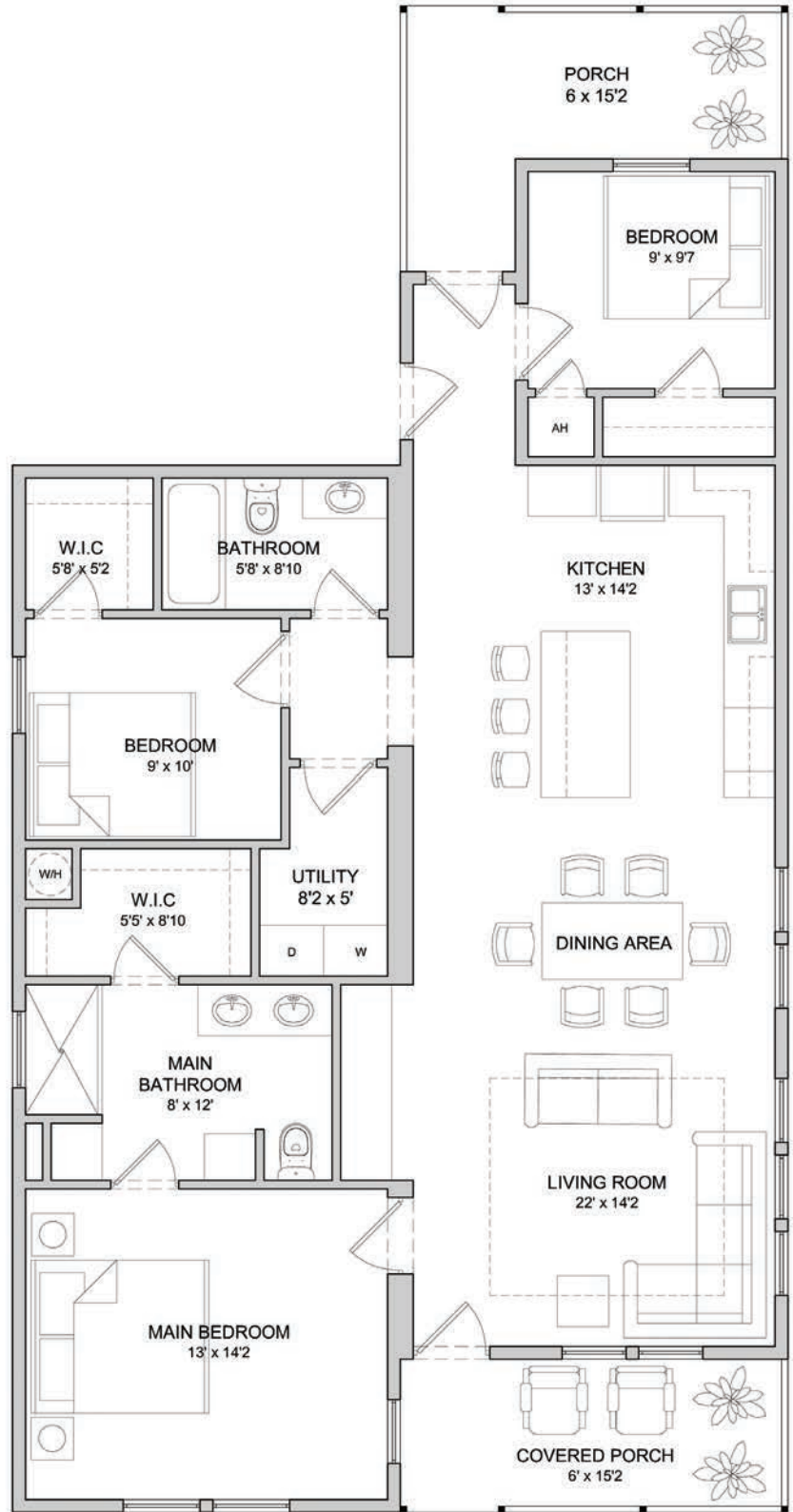
# The Camelia

3 BED / 2 BATH / GARAGE


1,316 SQ. FT.

## BEST-IN-CLASS AMENITIES

- Gated Community
- Designer-Appointed Clubhouse
- Resort Pool & Spa
- Entertainment Pavilion
- Outdoor Bar, Grill, & Firepit
- Putting Green
- Dog Park
- Charming Lake
- Boat & RV Storage
- Sport & Fitness Center with:
  - Resort Pool
  - Golf Simulator
- Pickleball Courts
- Bocce Ball Courts
- Shuffleboard Courts
- Horseshoe Pits



[TheOspreyBay.com](http://TheOspreyBay.com)

 Layout and dimensions may vary based on individual homes. Images may not accurately reflect the home.

 osprey bay

PALM HARBOR

# The Sands



Start fresh in Fort Myers with a beautiful cottage home.

2 BED + DEN / 2 BATH / CARPORT  
1,386 SQ. FT.

## FEATURES

Hardwood Shaker Cabinetry\*  
Luxury Vinyl Plank Flooring\*  
Ceramic Tile Backsplash\*  
Kitchen Island with Ample Storage  
High Definition Countertops  
Stainless Steel Electric Appliances  
Crown Molding Detail  
Farmhouse Kitchen Sink  
Large Main Suite with Walk-in Closet  
Walk-in Ceramic Tile Shower

Framed Bathroom Mirrors  
Brushed Nickel Hardware  
Designer Pendant Lights  
Covered Front Porch  
Open Concept Floor Plan  
Built to Highest Wind Zone Standards (WZ3)  
Farmhouse Baseboards & Window Trim  
Den with Sliding Barn Doors  
2" Faux Wood Blinds

Reserve your new home by contacting our Sales Team.

PHONE  
(239) 397-3119

EMAIL  
sales@theospreybay.com

**TheOspreyBay.com**

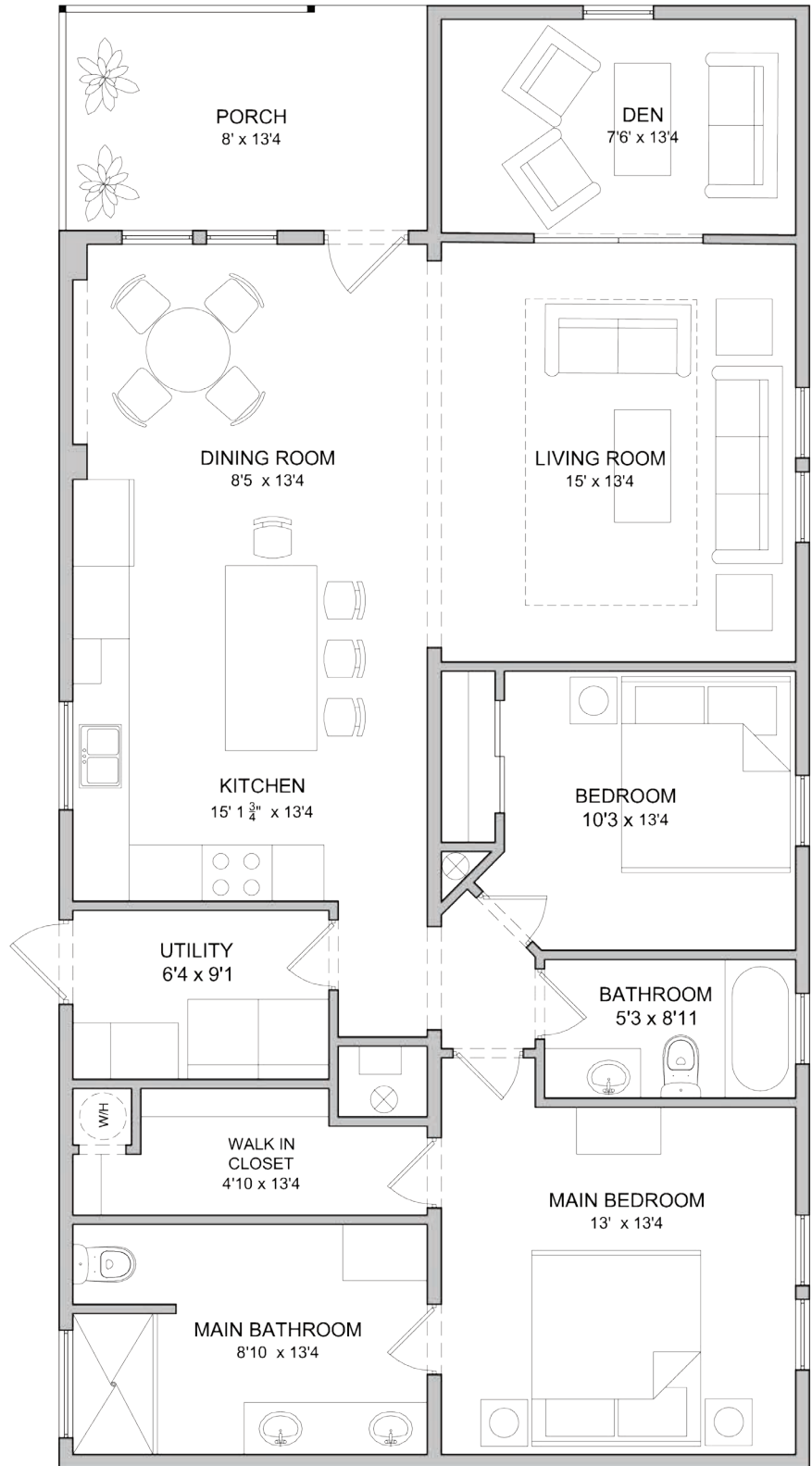
\*Custom color choices available.  
All home features are subject to change. Conceptual images may not accurately represent the home.

 **osprey bay**

# The Sands

## BEST-IN-CLASS AMENITIES

- Gated Community
- Designer-Appointed Clubhouse
- Resort Pool & Spa
- Entertainment Pavilion
- Outdoor Bar, Grill, & Firepit
- Putting Green
- Dog Park
- Charming Lake
- Boat & RV Storage
- Sport & Fitness Center with:
  - Resort Pool
  - Golf Simulator
  - Pickleball Courts
  - Bocce Ball Courts
  - Shuffleboard Courts
  - Horseshoe Pits





PALM HARBOR

# The Plumosa



Start fresh in Fort Myers with a beautiful cottage home.

2 BED / 2 BATH / CARPORT  
1,280 SQ. FT.

## FEATURES

Hardwood Shaker Cabinetry\*  
Luxury Vinyl Flooring\*  
Ceramic Tile Backsplash\*  
Kitchen Island with Ample Storage  
High Definition Countertops  
Stainless Steel Electric Appliances  
Farmhouse Kitchen Sink  
Main Suite with Walk-In Closet  
Walk-in Ceramic Tile Shower

Framed Bathroom Mirrors  
Built-in Bathroom Linen Cabinet  
Brushed Nickel Hardware  
Designer Pendant Lights  
Covered Front Porch  
Open Concept Floor Plan  
Built to Highest Wind Zone Standards (WZ3)  
2" Faux Wood Blinds

Reserve your new home by contacting our Sales Team.

PHONE  
(239) 397-3119

EMAIL  
sales@theospreybay.com

**TheOspreyBay.com**

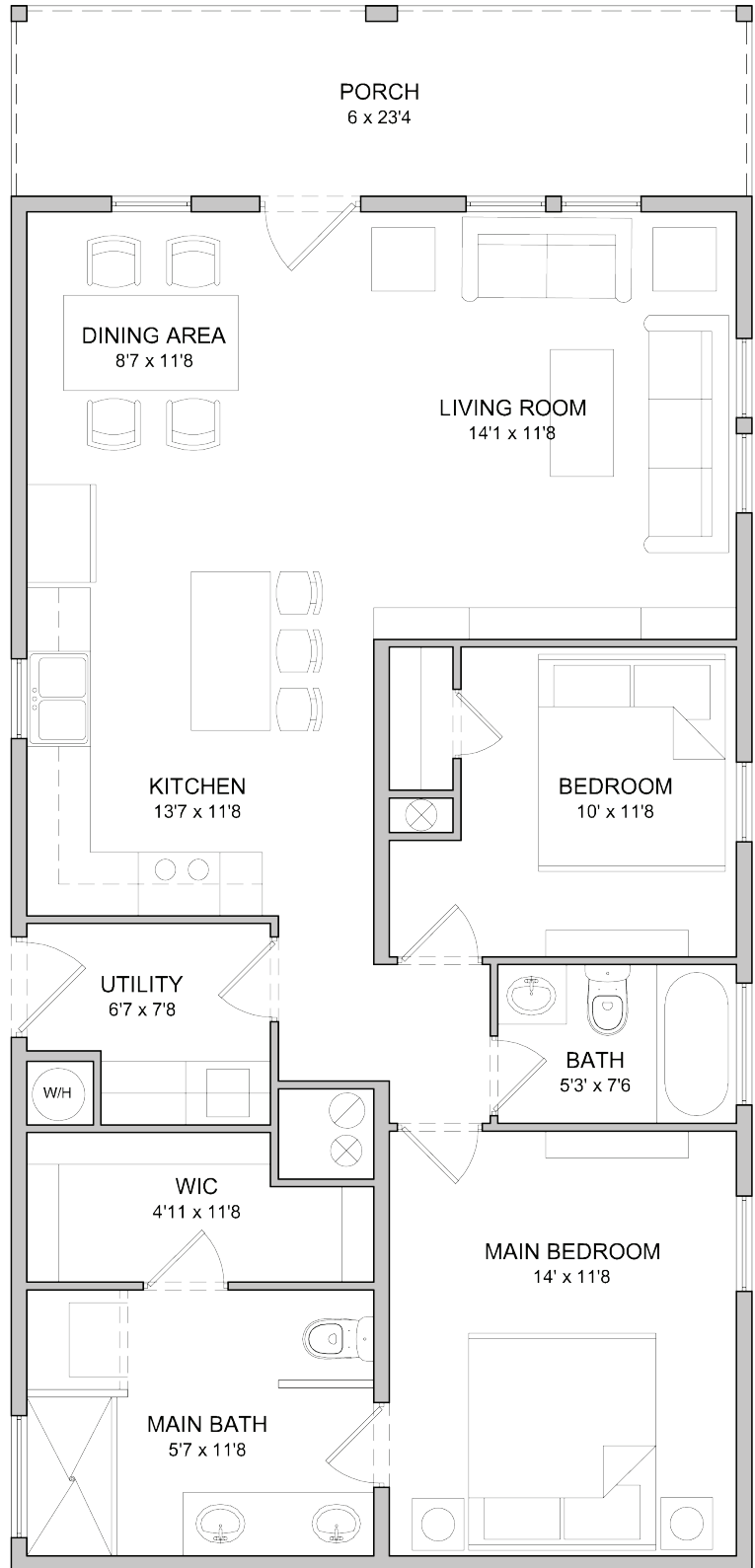
\*Custom color choices available.  
All home features are subject to change. Conceptual images may not accurately represent the home.

 **osprey bay**

# The Plumosa

## BEST-IN-CLASS AMENITIES

- Gated Community
- Designer-Appointed Clubhouse
- Resort Pool & Spa
- Entertainment Pavilion
- Outdoor Bar, Grill, & Firepit
- Putting Green
- Dog Park
- Charming Lake
- Boat & RV Storage
- Sport & Fitness Center with:
  - Resort Pool
  - Golf Simulator
  - Pickleball Courts
  - Bocce Ball Courts
  - Shuffleboard Courts
  - Horseshoe Pits



PALM HARBOR

# The Lantana



Start fresh in Fort Myers with a beautiful cottage home.

3 BED / 2 BATH / CARPORT  
1,334 SQ. FT.

## FEATURES

Hardwood Shaker Cabinetry\*

Luxury Vinyl Plank Flooring\*

Ceramic Tile Backsplash\*

High Definition Countertops

Kitchen Island with Ample Storage

Crown Molding Detail

Stainless Steel Electric Appliances

8' Cathedral Porch Ceiling

Cathedral and 9' Flat Interior Ceilings

Farmhouse Kitchen Sink

Walk-in Ceramic Tile Shower

Custom Closet\*\*

Framed Bathroom Mirrors

Brushed Nickel Hardware

Designer Pendant Lights

Covered Front Porch & Rear Deck

Elevation with Bump-Out Windows

Open Concept Floor Plan

Built to Highest Wind Zone  
Standards (WZ3)

2" Faux Wood Blinds

Reserve your new home by  
contacting our Sales Team.

PHONE

(239) 397-3119

EMAIL

[sales@theospreybay.com](mailto:sales@theospreybay.com)

[TheOspreyBay.com](http://TheOspreyBay.com)

\*Custom color choices available.

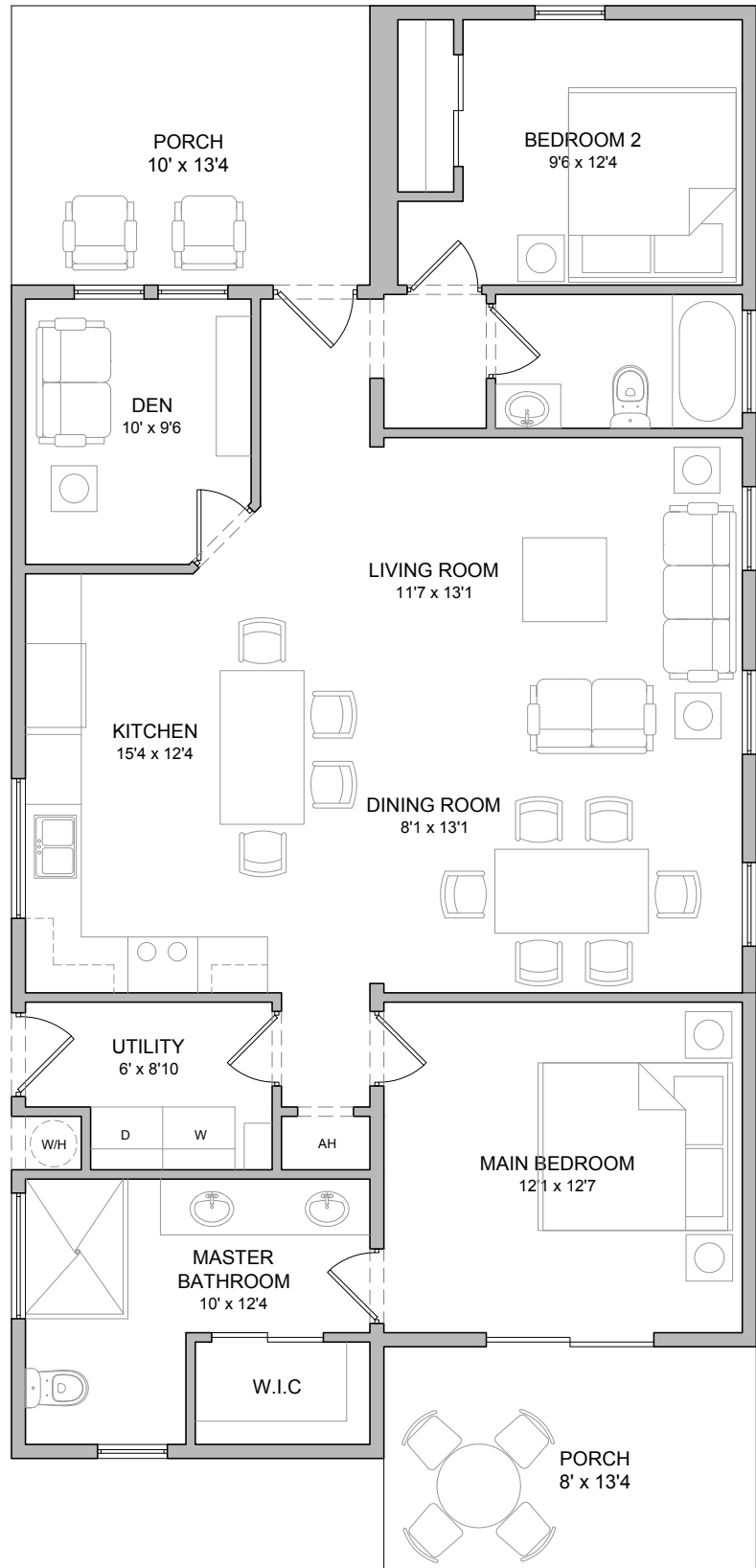
All home features are subject to change. Conceptual images may not accurately represent the home.

 osprey bay

# The Lantana

## BEST-IN-CLASS AMENITIES

- Gated Community
- Designer-Appointed Clubhouse
- Resort Pool & Spa
- Entertainment Pavilion
- Outdoor Bar, Grill, & Firepit
- Putting Green
- Dog Park
- Charming Lake
- Boat & RV Storage
- Sport & Fitness Center with:
  - Resort Pool
  - Golf Simulator
- Pickleball Courts
- Bocce Ball Courts
- Shuffleboard Courts
- Horseshoe Pits



PALM HARBOR

# The Banyan



Start fresh in Fort Myers with a beautiful cottage home.

3 BED / 2 BATH / CARPORT  
1,608 SQ. FT.

## FEATURES

Hardwood Shaker Cabinetry\*  
Luxury Vinyl Plank Flooring\*  
Ceramic Tile Backsplash\*  
Kitchen Island with Ample Storage  
High Definition Countertops  
Stainless Steel Electric Appliances  
Crown Molding Detail  
Farmhouse Kitchen Sink  
Main Suite with Large Walk-in Closet  
Walk-in Ceramic Tile Shower

Framed Bathroom Mirrors  
Brushed Nickel Hardware  
Designer Pendant Lights  
Bonus Room Access from  
Utility Room/Kitchen  
Covered Front Porch  
Open Concept Floor Plan  
Built to Highest Wind Zone  
Standards (WZ3)  
2" Faux Wood Blinds

Reserve your new home by  
contacting our Sales Team.

PHONE  
(239) 397-3119

EMAIL  
sales@theospreybay.com

**TheOspreyBay.com**

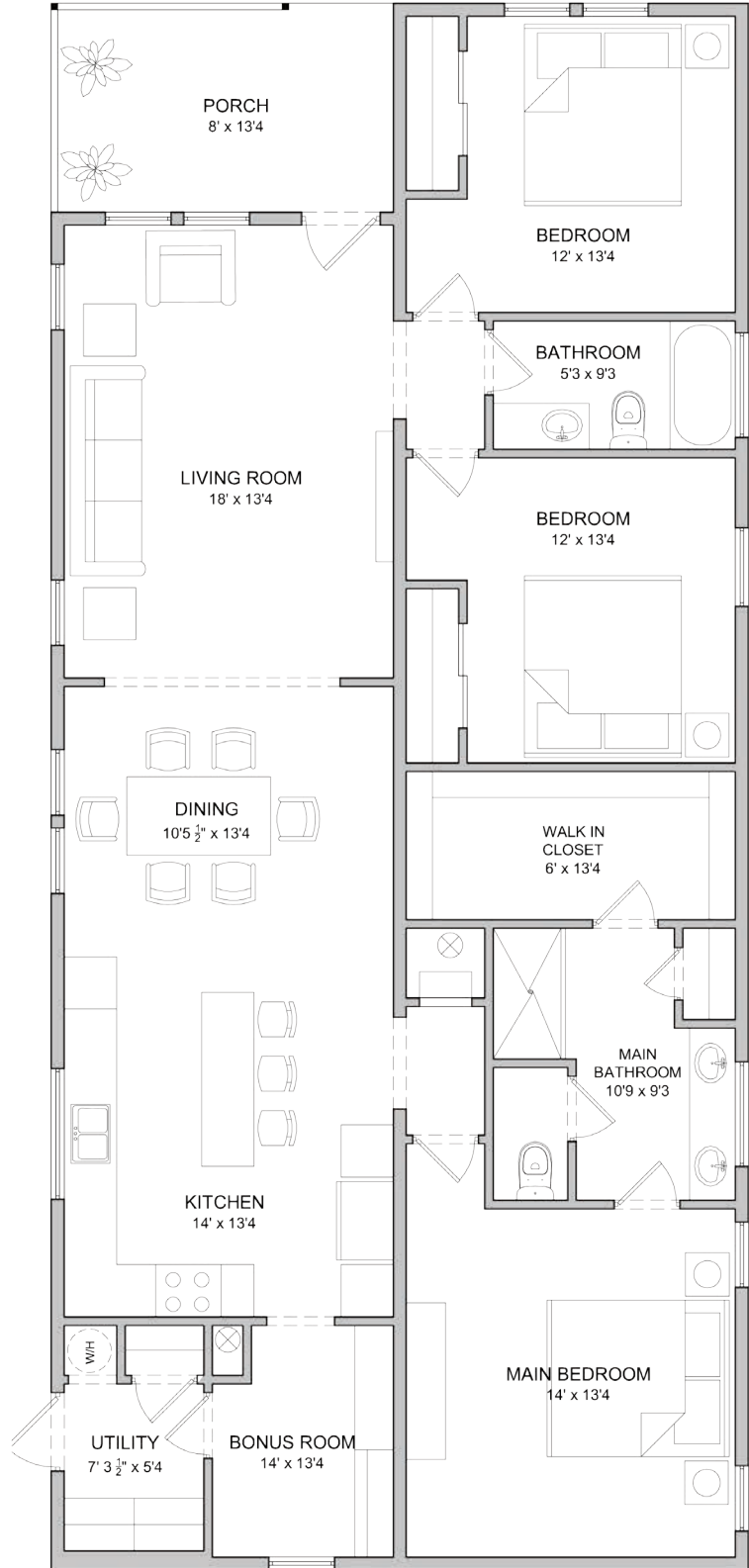
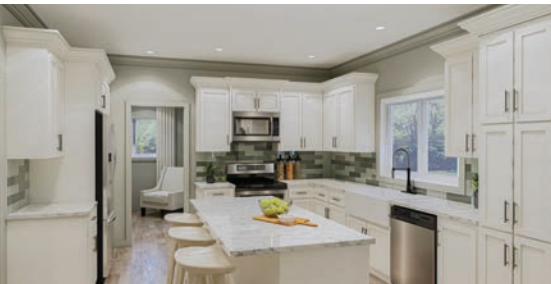
\*Custom color choices available.  
All home features are subject to change. Conceptual images may not accurately represent the home.

 **osprey bay**

# The Banyan

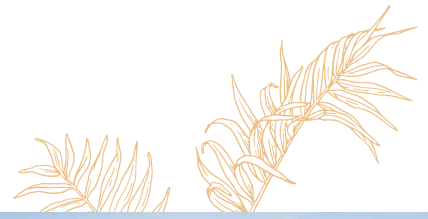
## BEST-IN-CLASS AMENITIES

- Gated Community
- Designer-Appointed Clubhouse
- Resort Pool & Spa
- Entertainment Pavilion
- Outdoor Bar, Grill, & Firepit
- Putting Green
- Dog Park
- Charming Lake
- Boat & RV Storage
- Sport & Fitness Center with:
  - Resort Pool
  - Golf Simulator
- Pickleball Courts
- Bocce Ball Courts
- Shuffleboard Courts
- Horseshoe Pits



FLEETWOOD

# The Jasmine



Start fresh in Fort Myers with a beautiful cottage home.

3 BED / 2 BATH / CARPORT  
1,290 SQ. FT.

## FEATURES

Hardwood Shaker Cabinetry\*  
Quality Linoleum Flooring\*  
Ceramic Tile Backsplash\*  
Kitchen Island with Ample Storage  
High Definition Countertops  
Stainless Steel Electric Appliances  
Farmhouse Kitchen Sink

Main Suite with Walk-in Closet  
Framed Bathroom Mirrors  
Oil Rubbed Bronze Hardware  
Covered Front Porch  
Open Concept Floor Plan  
Built to Highest Wind Zone  
Standards (WZ3)

Reserve your new home by contacting our Sales Team.

PHONE  
(239) 397-3119

EMAIL  
sales@theospreybay.com

**TheOspreyBay.com**

\*Custom color choices available.  
All home features are subject to change. Conceptual images may not accurately represent the home.



FLEETWOOD

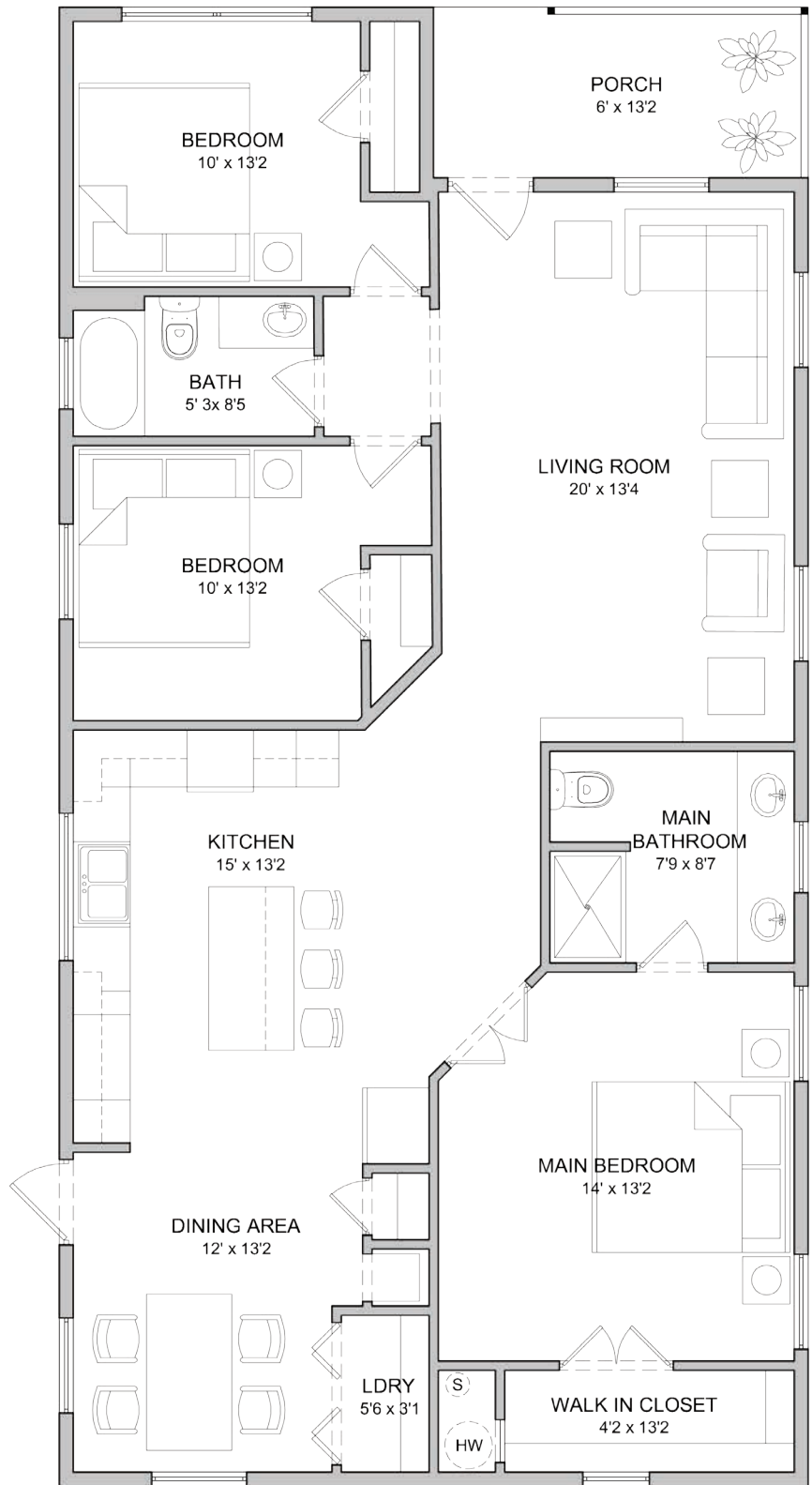
# The Jasmine

3 BED / 2 BATH / CARPORT


1,290 SQ. FT.

## BEST-IN-CLASS AMENITIES

- Gated Community
- Designer-Appointed Clubhouse
- Resort Pool & Spa
- Entertainment Pavilion
- Outdoor Bar, Grill, & Firepit
- Putting Green
- Dog Park
- Charming Lake
- Boat & RV Storage
- Sport & Fitness Center with:
  - Resort Pool
  - Golf Simulator
  - Pickleball Courts
  - Bocce Ball Courts
  - Shuffleboard Courts
  - Horseshoe Pits



[TheOspreyBay.com](http://TheOspreyBay.com)

 Layout and dimensions may vary based on individual homes. Images may not accurately reflect the home.

 osprey bay



DESTINY

# The Gardenia



Start fresh in Fort Myers with a beautiful cottage home.

3 BED / 2 BATH / CARPORT  
1,307 SQ. FT.

## FEATURES

Hardwood Cabinetry\*  
Luxury Vinyl Flooring\*  
Ceramic Tile Backsplash\*  
High Definition Countertops  
Kitchen Island with Ample Storage  
Stainless Steel Electric Appliances  
Shiplap accents throughout the home  
Farmhouse Kitchen Sink  
Walk-in Shower

Electric Fireplace  
Deluxe Black Hardware  
Designer Pendant Lights  
Lighted Ceiling Fans  
Exposed Beams in Living Room & Main Bedroom  
Covered Front Porch  
Open Concept Floor Plan  
Built to Highest Wind Zone Standards (WZ3)

Reserve your new home by contacting our Sales Team.

PHONE  
(239) 397-3119

EMAIL  
sales@theospreybay.com

**TheOspreyBay.com**

\*Custom color choices available.  
All home features are subject to change. Conceptual images may not accurately represent the home.

 **osprey bay**

DESTINY

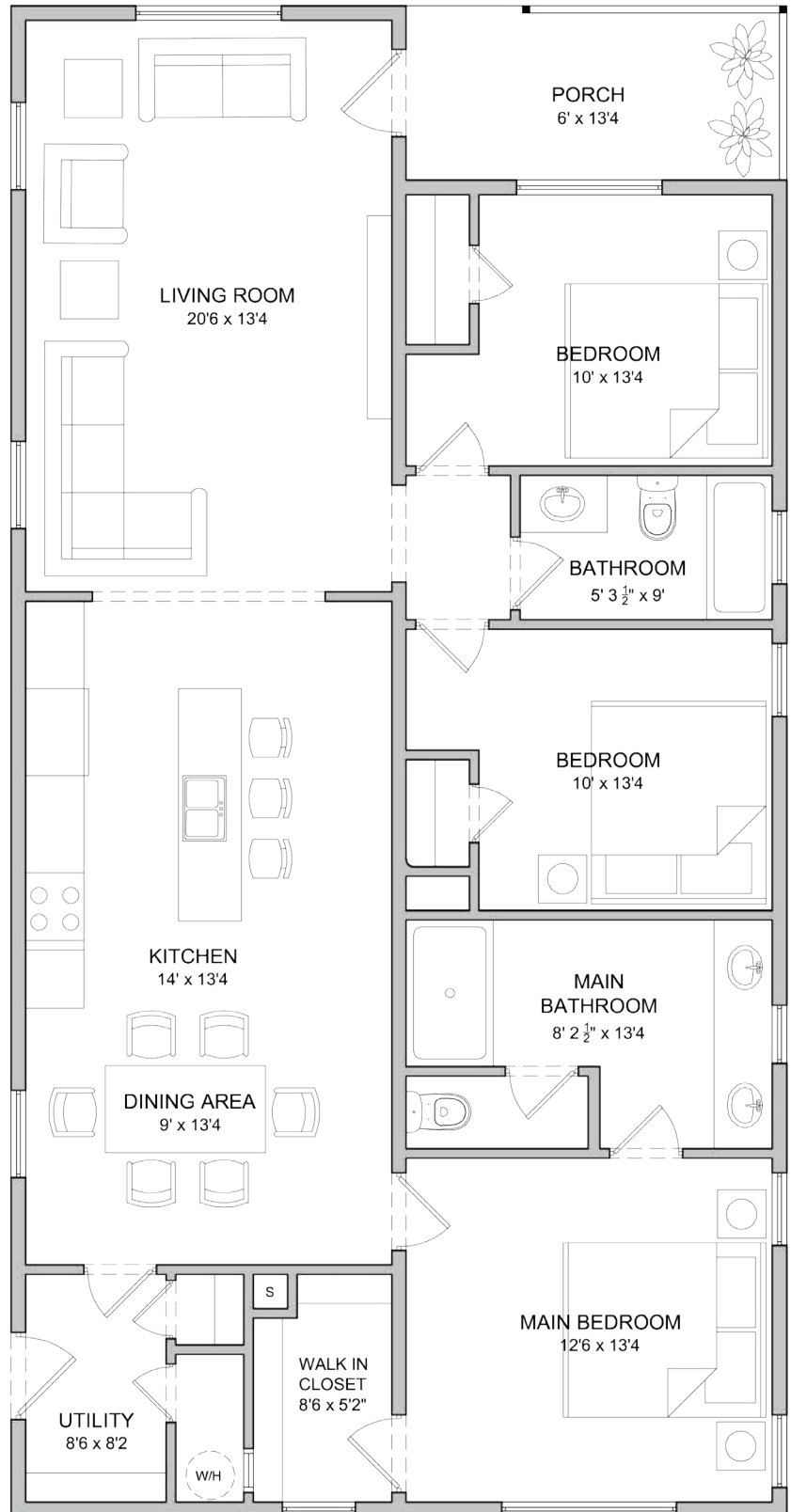
# The Gardenia

3 BED / 2 BATH / CARPORT


1,307 SQ. FT.

## BEST-IN-CLASS AMENITIES

- Gated Community
- Designer-Appointed Clubhouse
- Resort Pool & Spa
- Entertainment Pavilion
- Outdoor Bar, Grill, & Firepit
- Putting Green
- Dog Park
- Charming Lake
- Boat & RV Storage
- Sport & Fitness Center with:
  - Resort Pool
  - Golf Simulator
  - Pickleball Courts
  - Bocce Ball Courts
  - Shuffleboard Courts
  - Horseshoe Pits



[TheOspreyBay.com](http://TheOspreyBay.com)

 Layout and dimensions may vary based on individual homes. Images may not accurately reflect the home.

 osprey bay

DESTINY

# The Poinciana



Start fresh in Fort Myers with a beautiful cottage home.

2 BED / 2 BATH / CARPORT  
1,213 SQ. FT.

## FEATURES

Hardwood Shaker Cabinetry\*  
Luxury Vinyl Flooring\*  
Ceramic Tile Backsplash\*  
Kitchen Island with Ample Storage  
High Definition Countertops  
Stainless Steel Electric Appliances  
Farmhouse Kitchen Sink  
Electric Fireplace  
Main Suite with Walk-in Closet

Walk-in Shower  
Framed Bathroom Mirrors  
Built-in Bathroom Shelving  
Brushed Nickel Hardware  
Designer Pendant Lights  
Covered Front Porch  
Open Concept Floor Plan  
Built to Highest Wind Zone  
Standards (WZ3)

Reserve your new home by contacting our Sales Team.

PHONE  
(239) 397-3119

EMAIL  
sales@theospreybay.com

**TheOspreyBay.com**

\*Custom color choices available.  
All home features are subject to change. Conceptual images may not accurately represent the home.

 **osprey bay**

DESTINY

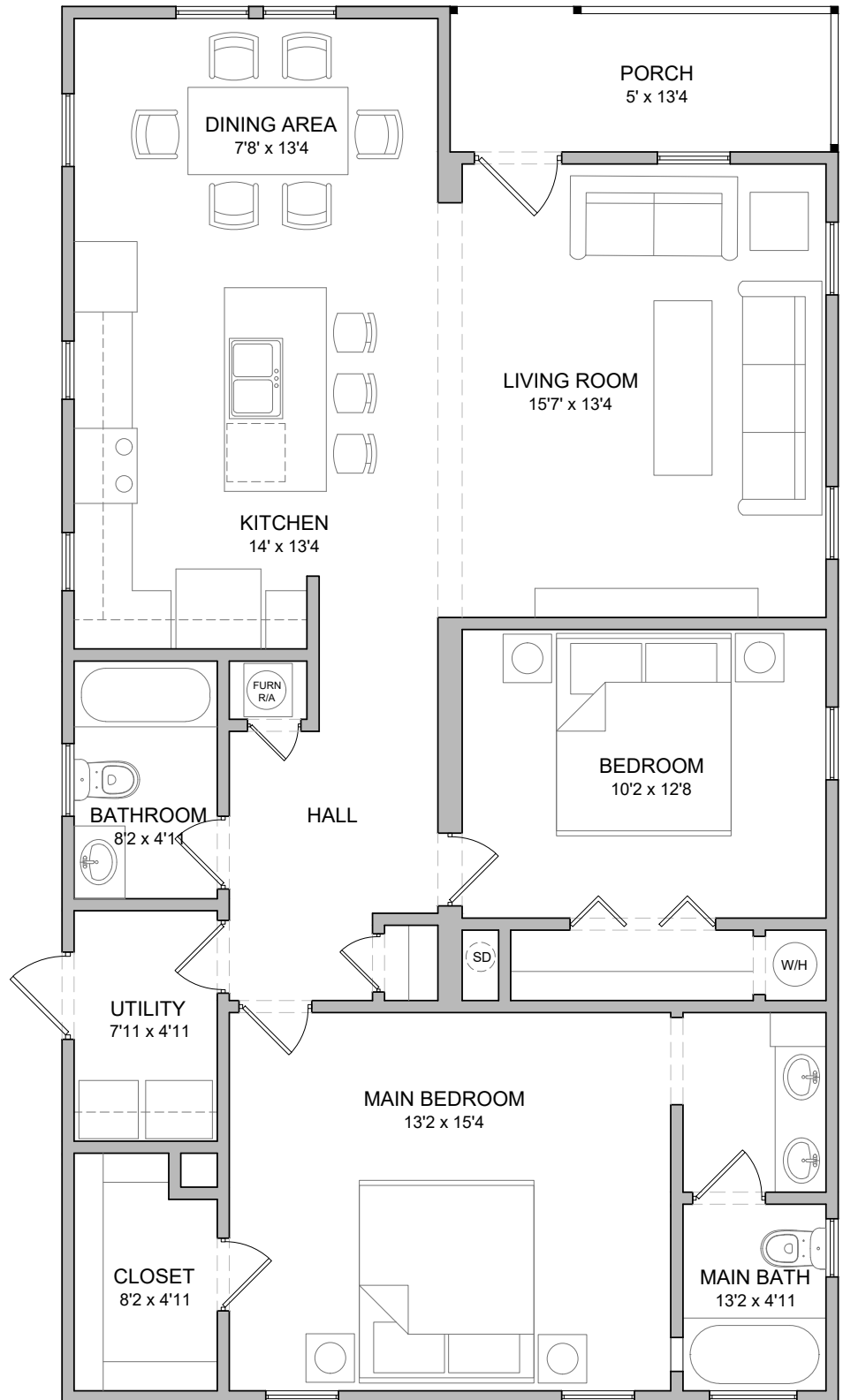
# The Poinciana

2 BED / 2 BATH / CARPORT

1,213 SQ. FT.

## BEST-IN-CLASS AMENITIES

- Gated Community
- Designer-Appointed Clubhouse
- Resort Pool & Spa
- Entertainment Pavilion
- Outdoor Bar, Grill, & Firepit
- Putting Green
- Dog Park
- Charming Lake
- Boat & RV Storage
- Sport & Fitness Center with:
  - Resort Pool
  - Golf Simulator
  - Pickleball Courts
  - Bocce Ball Courts
  - Shuffleboard Courts
  - Horseshoe Pits



[TheOspreyBay.com](http://TheOspreyBay.com)



Layout and dimensions may vary based on individual homes. Images may not accurately reflect the home.



CHAMPION

# The Seaside



Start fresh in Fort Myers with a beautiful cottage home.

2 BED / 2 BATH / CARPORT  
1,188 SQ. FT.

## FEATURES

Hardwood Shaker Cabinetry\*  
Luxury Vinyl Plank Flooring\*  
Ceramic Tile Backsplash\*  
Kitchen Island with Ample Storage  
High Definition Countertops  
Stainless Steel Electric Appliances  
Farmhouse Kitchen Sink  
Crown Molding Detail  
Main Suite with Walk-In Closet

Main Bathroom with Mosaic Tile Backsplash and Vessel Sinks  
Walk-in Ceramic Tile Shower  
Framed Bathroom Mirrors  
Brushed Nickel Hardware  
Covered Full Front Porch  
Open Concept Floor Plan  
Built to Highest Wind Zone Standards (WZ3)

Reserve your new home by contacting our Sales Team.

PHONE  
(239) 397-3119

EMAIL  
sales@theospreybay.com

**TheOspreyBay.com**

\*Custom color choices available.  
All home features are subject to change. Conceptual images may not accurately represent the home.



CHAMPION

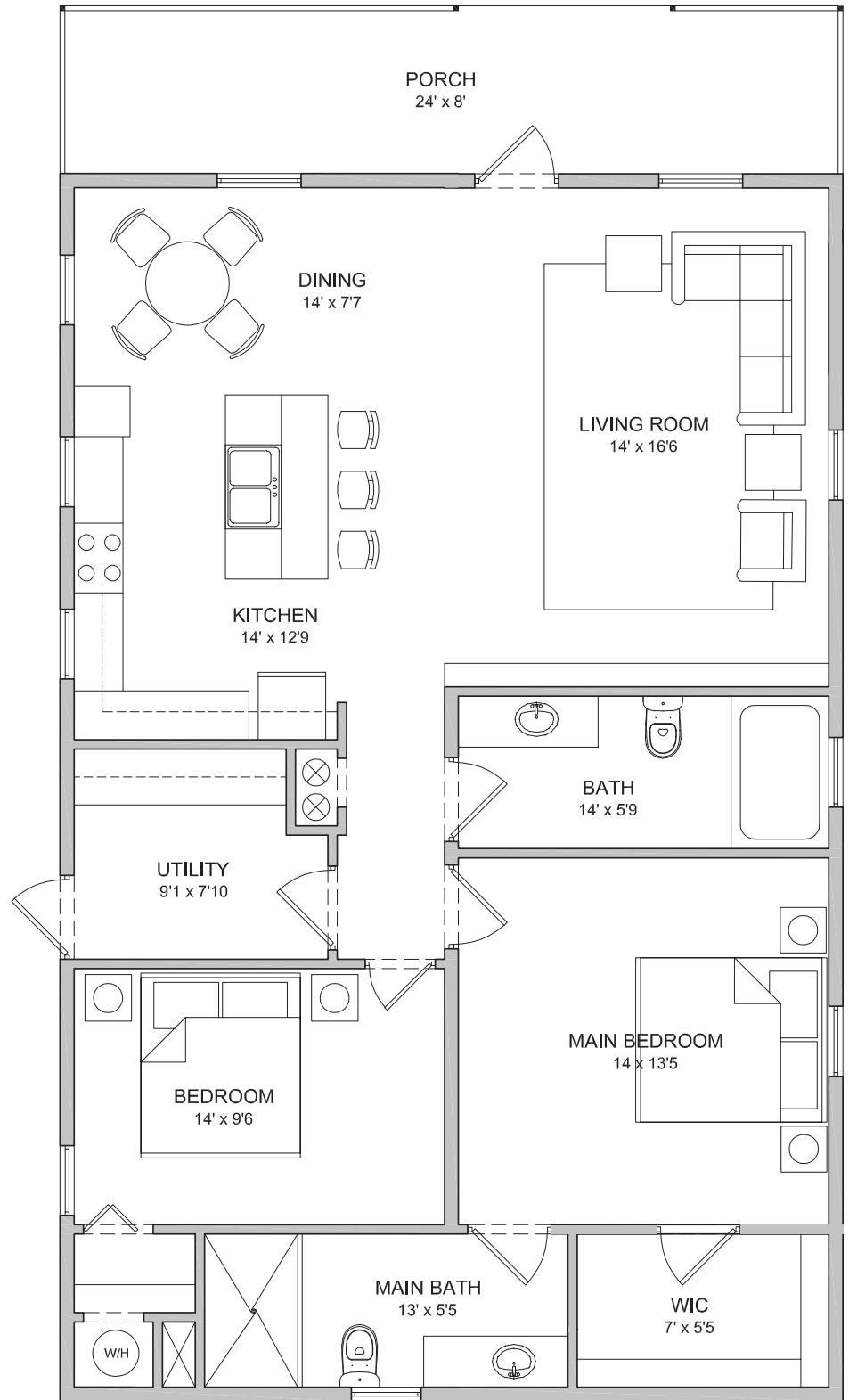
# The Seaside

2 BED / 2 BATH / CARPORT


1,188 SQ. FT.

## BEST-IN-CLASS AMENITIES

- Gated Community
- Designer-Appointed Clubhouse
- Resort Pool & Spa
- Entertainment Pavilion
- Outdoor Bar, Grill, & Firepit
- Putting Green
- Dog Park
- Charming Lake
- Boat & RV Storage
- Sport & Fitness Center with:
  - Resort Pool
  - Golf Simulator
  - Pickleball Courts
  - Bocce Ball Courts
  - Shuffleboard Courts
  - Horseshoe Pits



[TheOspreyBay.com](http://TheOspreyBay.com)

 Layout and dimensions may vary based on individual homes. Images may not accurately reflect the home.



JACOBSON

# The Azalea



Start fresh in Fort Myers with a beautiful cottage home.

3 BED / 2 BATH / CARPORT  
1,463 SQ. FT.

## FEATURES

Hardwood Shaker Cabinetry\*  
Luxury Laminate Flooring\*  
Glass Tile Backsplash\*  
Kitchen Island with Ample Storage  
High Definition Countertops  
Stainless Steel Electric Appliances  
Farmhouse Kitchen Sink  
Chrome Pull Out Spray Faucet  
Main Suite with Walk-In Closet

Statesman Tile Shower  
Framed Bathroom Mirrors  
Brushed Nickel Hardware  
Designer Pendant Lights  
5" Crown Molding Detail  
Covered Front Porch  
Open Concept Floor Plan  
Built to Highest Wind Zone  
Standards (WZ3)

Reserve your new home by contacting our Sales Team.

PHONE  
(239) 397-3119

EMAIL  
sales@theospreybay.com

**TheOspreyBay.com**

\*Custom color choices available.  
All home features are subject to change. Conceptual images may not accurately represent the home.

 **osprey bay**

JACOBSON

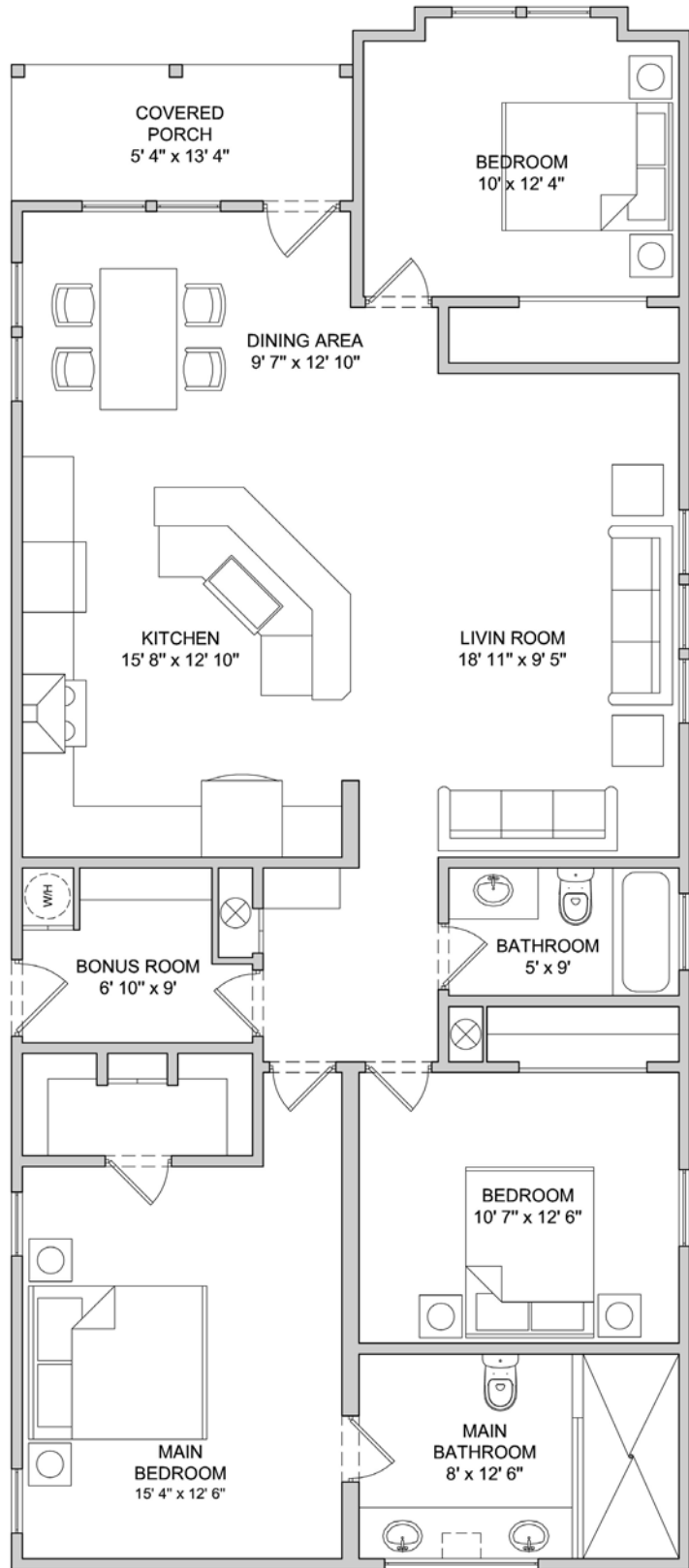
# The Azalea

3 BED / 2 BATH / CARPORT


1,463 SQ. FT.

## BEST-IN-CLASS AMENITIES

- Gated Community
- Designer-Appointed Clubhouse
- Resort Pool & Spa
- Entertainment Pavilion
- Outdoor Bar, Grill, & Firepit
- Putting Green
- Dog Park
- Charming Lake
- Boat & RV Storage
- Sport & Fitness Center with:
  - Resort Pool
  - Golf Simulator
  - Pickleball Courts
  - Bocce Ball Courts
  - Shuffleboard Courts
  - Horseshoe Pits



[TheOspreyBay.com](https://www.TheOspreyBay.com)

 Layout and dimensions may vary based on individual homes. Images may not accurately reflect the home.

 osprey bay